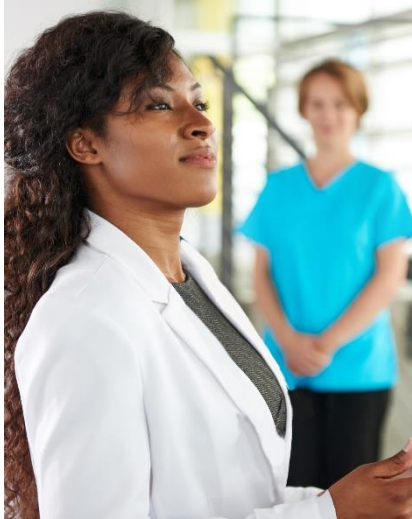


CHC43115

Certificate IV in Disability



HealthLinkTraining
Established 2012



Health Link Training

Inside this brochure:

Course Overview
Recommended for
Entry Requirements
Competencies
Learning Arrangements
Assessments
Skills Recognition
Course Fees
Enquiries and Enrolments

Contact Details

Health Link Training

P.O. Box 6,
Dianella WA 6059

P: 1300 885 046

F: 1300 887 383

E: admin@healthlinktraining.com.au

W: www.healthlinktraining.com.au

Course Overview

This qualification is ideal for experienced care workers reflecting roles in a range of community settings to support in a manner that empowers people with disabilities to achieve greater levels of independence, self-reliance, community participation and wellbeing. Workers promote a person-centered approach, work without direct supervision and may be required to supervise and/or coordinate a small team. Participants have the opportunity to work in hostels, disability care providers, NDIS approved providers, group homes, client's home environment and the community.

Job roles and titles vary across different industry sectors. Possible job titles relevant to this qualification include:

- Supervisor
- Team Leader
- Development Officer
- Disability Support Worker/Officer
- Disability Officer Day Support
- Employment Coordinator (Disability)
- Lifestyle support officer
- Social educator
- Social Trainer
- Local Area Coordinator

There are 14 units of competency to complete to be awarded the full qualification.

Recommended For

Support workers who hold Certificate III in Disability with experience and Are seeking a promotion within an organisation at supervisory level.

Opportunities exist for full-time, part-time and casual, making it suitable for all lifestyles.



Entry Requirements

People who enrol in this course must meet certain pre-requisites due to the nature of the work and because part of the training is delivered in the workplace.

Course requirements:

- ✓ Language, Literacy and Numeracy, to a minimum of ACSF level 3
- ✓ A current National Police Clearance
- ✓ Drivers Licence with vehicle
- ✓ Proof of COVID vaccination
- ✓ Proof of vaccination and obtain a current flu vaccine
- ✓ Access to a notebook or computer
- ✓ Ability to attend practical work experience at 7am for 3 weeks
- ✓ Proof of residency (passport, visa, birth certificate)

Students will be required to submit valid forms of photo ID, proof of citizenship / residency / visa status and also complete a student enrolment form. You are eligible for the course if you have left school, your primary place of residence is in Western Australia and you are:

- an Australian citizen;
- a permanent visa holder;
- a holder of visa subclass 309, 444, 785, 790, 820, 449, 826 and 786, which are currently used for Ukraine and Afghan nationals;
- secondary holders of a temporary visa of sub[1]class 457;
- Holders of a Bridging Visa E (subclasses 050 and 051) where the visa holder has made a valid application for a visa of subclass 785 or 790.
- bridging visas holders who are not subject to condition 8101 and have made a valid application for a Permanent Protection Visa (subclass 866);
- secondary holders (spouses and dependents) of a Temporary Skill Shortage visa (subclass 482)

Working with Children Check

You may also be required to have a Working with Children Check issued by the Working with Children Screening Unit, Department for Community Development. For more information, please visit the Working with Children website at www.checkwwc.wa.gov.au/checkwwc.

Manual Handling Certificate

All participants undertaking work experience must have a Manual Handling Certificate. If a participant already has their certificate, they must provide the original to Health Link Training so that a certified copy can be put on their file.

Any participant who does not currently hold a Manual Handling Certificate will be required to complete one prior to them being eligible for work experience.



Practical work experience

Health Link Training organises all practical work placements on behalf of the student. You are required to complete 120 hours of on-the-job training within a disability services organisation, three (3) weeks full-time starting at 7.00am. This is determined by the facility who will interview you and you will require the following -

- Your Australian driver's license.
- National Police Clearance no more than three months old
- HLTAID003 Provide First Aid Certificate (if you have one)
- Proof of residency (Passport, Visa, birth cert etc)
- NDIS Worker Orientation module certificate
- NDIS workers screen check (or proof of application)

Competencies

There are 14 units of competency to complete that are compulsory for the triple qualification.

Core

1. CHCCCS015 Provide individualised support
2. CHCDIS002 Follow established person-centred behaviour supports
3. CHCDIS005 Develop and provide person-centred responses
4. CHCDIS007 Facilitate the empowerment of people with disability
5. CHCDIS008 Facilitate community participation and social inclusion
6. CHCDIS009 Facilitate ongoing skills development using a person-
7. CHCDIV001 Work with diverse people
8. CHCLEG003 Manage legal and ethical compliance
9. HLTAAP001 Recognise healthy body systems
10. HLTWHS002 Follow safe work practices for direct client care
11. CHCDIS010 Provide person-centred services to people with

Electives

12. CHCCCS023 Support independence and well being
13. CHCCCS025 Support relationships with carers and families
14. CHCCCS006 Facilitate individual service planning and delivery

Learning Arrangements

This qualification can be completed through a traineeship or a blended study of self-paced learning with online assessments, supported by an Industry Specialist Trainer with site visits and invitations to attend our workshops and training sessions.



Dress code for workshops and practical work experience –

- Black pants
- Polo shirt black or white
- Closed in shoes
- Hair tied back
- No jewellery (wedding ring accepted)
- PPE if required will be supplied by Health Link Training at workshops
- PPE if required will be supplied by work experience organisation

During the enrolment process students will go through their training and assessment arrangements in detail, including online training, completion of assessments and practical work experience. A training plan can be developed to meet your specific needs which will consider previous experience and learning needs if required.

Assessments

All assessments are competency based. You will be assessed against each unit of competency as well as the full qualification.

The type of assessment tasks may include:

- Practical demonstration
- Knowledge based test
- Portfolio of evidence
- Case studies
- Research projects
- On-the-job assessments
- Oral questioning
- Direct observation

Skills Recognition

The process of Skills Recognition (Recognition of Prior Learning and/or Recognition of Current Competencies) gives those people with the relevant experience the opportunity to gain formal recognition for their competencies (skills and knowledge) gained through life, work and study, regardless of where, when and how they were achieved.

Participants are responsible for gathering evidence that will show they have the required competencies to the standard set out by the industry in the National Competency Standards.

Course Duration

We recommend you complete this course within 12 months.

Course Recognition

This course meets the national training requirement for Qualification CHC43115 Certificate IV in Disability all listed units. On successful completion of all 14 units of competency you are issued a nationally recognised Qualification CHC43115 Certificate IV in Disability and a Transcript of Results listing your units. If you only partially complete your qualification, you will be issued a Statement of Attainment listing your completed units of competency.



Enquiries and Enrolments

Health Link Training takes a personalised approach with student enrolments into our qualifications. You will undertake a screening process via a telephone interview to ensure that this qualification is the right fit for you and we that can assist you with work experience placement given your location in WA. Our focus is to see an employment outcome from your work experience and or pathways to other opportunities.

Health Link Training provides support throughout your studies, but does not guarantee that the learner will successfully complete this course. The learner is provided with sufficient resources, training and time to complete. Further, Health Link Training provides successful graduates support and resources to obtain employment, although employment is not guaranteed.



PO Box 6, Dianella, WA 6059
Phone: 1300 885 046

Email: admin@healthlinktraining.com.au
Web: www.healthlinktraining.com.au

RTO No: 52576
ABN No: 13 142 546 432



HealthLinkTraining
Established 2012



CHC43115 Certificate IV
(Disability)